



VibroGlass



SensoPad

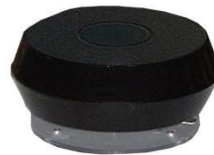
VibroGlass - Audio transducer

Utilizing a patented electro acoustic technology, the Vibro Glass transforms sonic signals into sonic mechanical vibrations to produce sound.

The Vibro Glass transmits clear sound or music through any flat object, be it glass, wood, plastic, plaster board... producing a non directional, diffuse sound.

The Vibro Glass converts walls, furniture, windows etc. into high quality speakers to discreetly broadcast messages and music. Simply stick the unit with the adhesive pad provided to the chosen support and connect it to an amplified audio source.

A wide choice of audio and video players is available in the ID-AL range to create interactive shop window displays broadcasting audiovisual information even when the shop is closed.



Example of use:

VibroGlass

- Stick the Vibro Glass to shop windows and connect to the Flash MPX video player to broadcast video clips on demand when the shop is closed.
- Mount the Vibro Glass beneath a bath tub, place it under table or embed it into artificial landscape or wooden wall.
- In museum, art galleries, get the pictures, the objects to talk and tell their story.
- Create special sound effects or integrate in interactive kiosks.

SensoPad

- Trigger sounds, videos or events through any insulating surface. Replace push buttons.
- Invisible and theft-proof user interface in interactive terminals.
- Man-machine interface in industrial applications..

SensoPad - Interactive touch sensor

SensoPad is an interface used to send playback order to the NanoPlayer, the MicroPlayer or any other device providing input contacts. It is a proximity sensor operating through any insulating material.



Stuck onto a chosen surface, the SensoPad detects approach of finger and triggers the associated action, plays a specific file or directory.

The SensoPad works on wood, glass, plaster... It is an invisible trigger when integrated in pieces of furniture or decorating items.

The sensing distance depends on the size of the electrode and the type and thickness of the bearing surface; a conductive film supplied with the SensoPad key can be cut out to size and shape for adjusting the electrode and therefore the sensing distance.

SensoPad is an economical and easy to implement solution to create interactive scenes in many different environments: shop windows, design, furniture, kiosks and terminals.

A full hardware kit is available in the ID-AL range to create cost effective and highly reliable interactive AV applications: interactive players and audio transducer Vibro Glass.



SPECIFICATIONS

Vibro Glass:

- Frequency range: 100Hz - 15kHz (variable depending on support material)
- Impedance: 8 Ohms
- Rated power: 20W RMS
- Dimensions: dia 100 mm - Thickness 50 mm
- Weight: 900g

Sensopad :

- Capacitive touch switch technology.
- Open-drain transistor output, compatible with NanoPlayer.
- Self-calibration on powering on in relation to material used.
- Sensing distance of several centimeters through glass and wood.
- Power supply from 7 to 15V DC. Low consumption (1mA in standby).
- Electrode film can be cut out as required to increase sensing distance and surface.
- Dimensions: 25 x 35 x 12 mm thickness