



Control4® Z-Wave® Quick Start Guide

Expand your smart home networking with Z-Wave® devices, a Control4® Z-Wave USB Dongle, and a Control4 Z-Wave Module

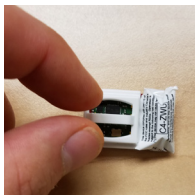
The Control4 Z-Wave USB Dongle (C4-ZDUSB) and Z-Wave Module (C4-ZWU/E/H) open up your system to Z-Wave integration with supported Z-Wave devices. Reliable, affordable devices like in-wall controllable outlets, outlet modules, door sensors, water detectors, and shade motor controls can extend the functionality of your Control4 Smart Home.

Supported devices, model numbers, specifications, and complete setup information can be found at ctrl4.co/z-wave.

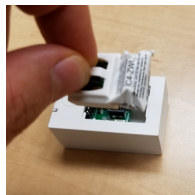
Installing your module

- 1 Install the Control4 Z-Wave Module into the Control4 Z-Wave USB Dongle. Hold the Z-Wave Module by the tab over the small circuit board and insert it into the dongle.
 - Make sure you have the correct Z-Wave Module for your region. See ctrl4.co/z-wave for more information.
- 2 Insert the lid into the dongle and connect the USB cable to the dongle.
- 3 Connect the USB end of the dongle to your controller. You must connect the Z-Wave USB Dongle to an EA controller and the controller running Director in your project must be an EA controller. (You can connect the dongle to a secondary EA controller if your primary controller is an EA controller.)

Hold Dongle by tab



Insert Dongle



Attach lid



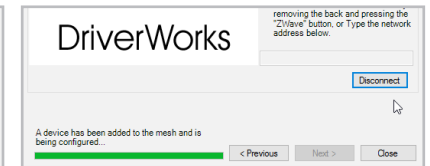
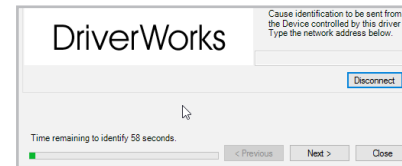
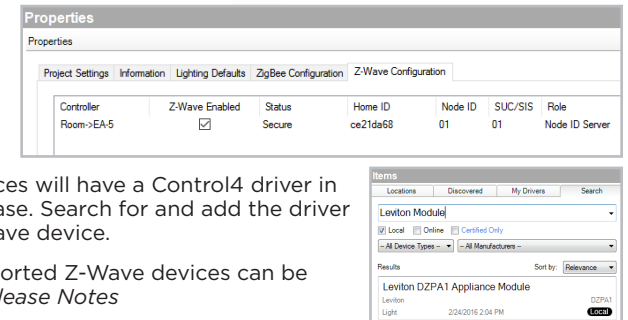
Connect to EA controller



Caution! After assembly, do not install the Z-Wave USB Dongle on a metal surface. For best Z-Wave signal performance, mount on a non-metal surface. A wall-mounting slot is included on the back of the dongle for easy wall installation.

Configuring Z-Wave Server and adding devices

- 1 Connect Composer Pro to your Director and go to the project *Properties* screen. Z-Wave network configuration is done in the *Z-Wave Configuration* tab.
- 2 Select the **Z-Wave Enabled** box to enable the Z-Wave controller. The *Status* field will show "Secure" when the Z-Wave mesh is online.
- 3 Supported Z-Wave devices will have a Control4 driver in the Online Driver Database. Search for and add the driver for your supported Z-Wave device.
 - A list of currently supported Z-Wave devices can be found in the *OS 2.9 Release Notes* (ctrl4.co/releasenotes).
- 4 Add the Z-Wave device to your mesh and identify it to the device driver. In *Connections > Network*, click **Z-Wave Network**. Double-click the device driver to open the *Identify* window. Follow the manufacturer's instructions to add the device to the Z-Wave mesh (usually by pressing the Z-Wave button). You must add the device before the 60-second timer runs out. The timer bar will complete and show green when the device is added successfully.



More information

For the full *Z-Wave Setup Guide*, go to ctrl4.co/z-wave-sg.

For more documentation, product information, and photos, go to ctrl4.co/z-wave.

