



The IDK SWC-2000 is remote controller for MSD series and FDX series products.

The SWC-2000 registers control commands and links to front buttons using web browser. It remotely controls connected devices that are connected via LAN or RS-232C. The SWC-2000 can be in standby state by turning off the power button.

The SWC-2000 can be used on a desk and mounted to a rack.

■ Specification

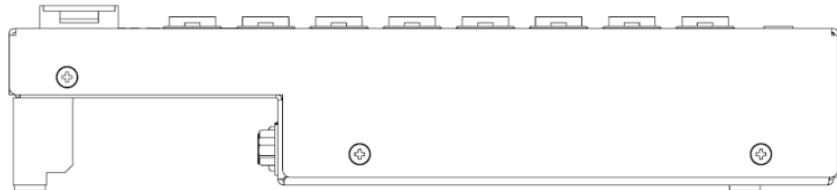
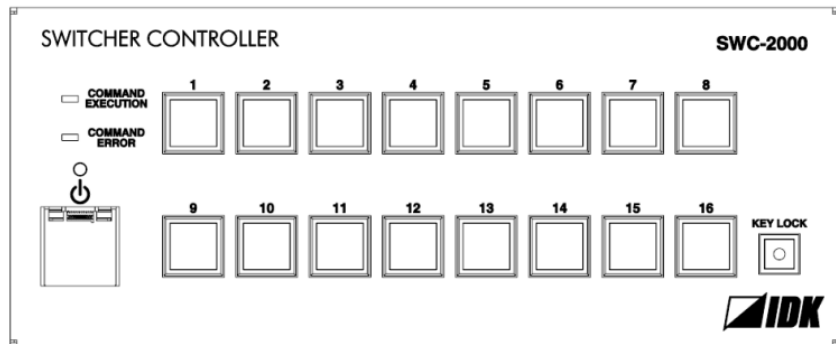
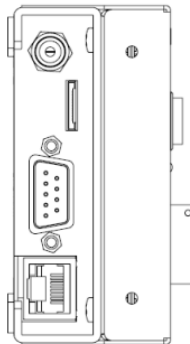
Item		Description
Number of control command buttons		16 buttons
Number of control commands that can be linked		Up to 10 commands per button
Number of control commands that can be registered		Up to 32 commands
External Control	RS-232C	1 port / male D-sub (9 pin)
	LAN	1 port / RJ-45 10Base-T / 100Base-TX (Auto Negotiation), Auto MDI / MDI-X
Recommended product		IDK's MSD / FDX series PJLink supported products, and others (General purpose products)
General	AC adapter	Input: 100 - 240 VAC ± 10%, 50 Hz / 60 Hz ± 3 Hz Output: DC 5 V 3 A (AC adapter is supplied)
	Power consumption	About 3 Watts
	Dimensions	8.5 (W) × 3.5 (H) × 1.6 (D)" (215 (W) × 88 (H) × 40.6 (D) mm) (Excluding connectors and the like) (*1)
	Weight	1.8 lbs. (0.8 kg)
	Temperature	Operating: 32°F to 104°F / 0°C to +40°C Storage: -4°F to +176°F / -20°C to +80°C
	Humidity	Operating/ Storage humidity: 20% to 90% (Non Condensing)

*1 When mounting the SWC-2000 to an EIA rack, use the optional rack mounting brackets. By using the mounting kit, one or two SWC-2000s can be mounted to the 2U-EIA rack.

■ Recommended products

Items		Parts number
IDK's products	MSD series	MSD-5401, MSD-5402, MSD-5403, MSD-5404, MSD-804FD, MSD-EX32, MSD-402, MSD-501, MSD-502, MSD-701, MSD-702, MSD-7201UHD, MSD-7202UHD, MSD-7203UHD, MSD-7204UHD, MSD-7201UHDTB, MSD-7202UHDTB, MSD-7203UHDTB, MSD-7204UHDTB, MSD-701UHD, MSD-702UHD, MSD-801UHD, MSD-802UHD, MSD-6203, MSD-6204, MSD-6206, MSD-6208
	FDX series	FDX-16, FDX-32, FDX-64, FDX-12UHD, FDX-32UHD
Other products		PJLink supported products, and others (General purpose products)

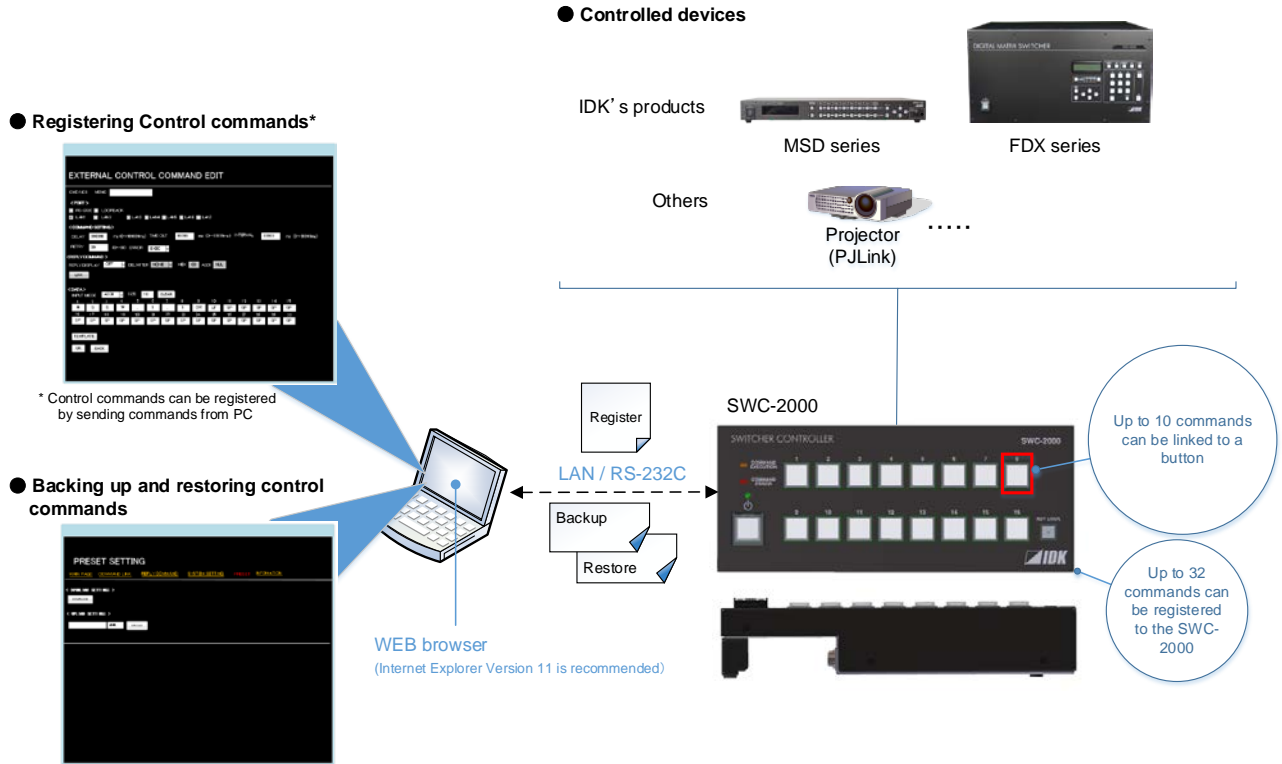
■ Front & Rear panels



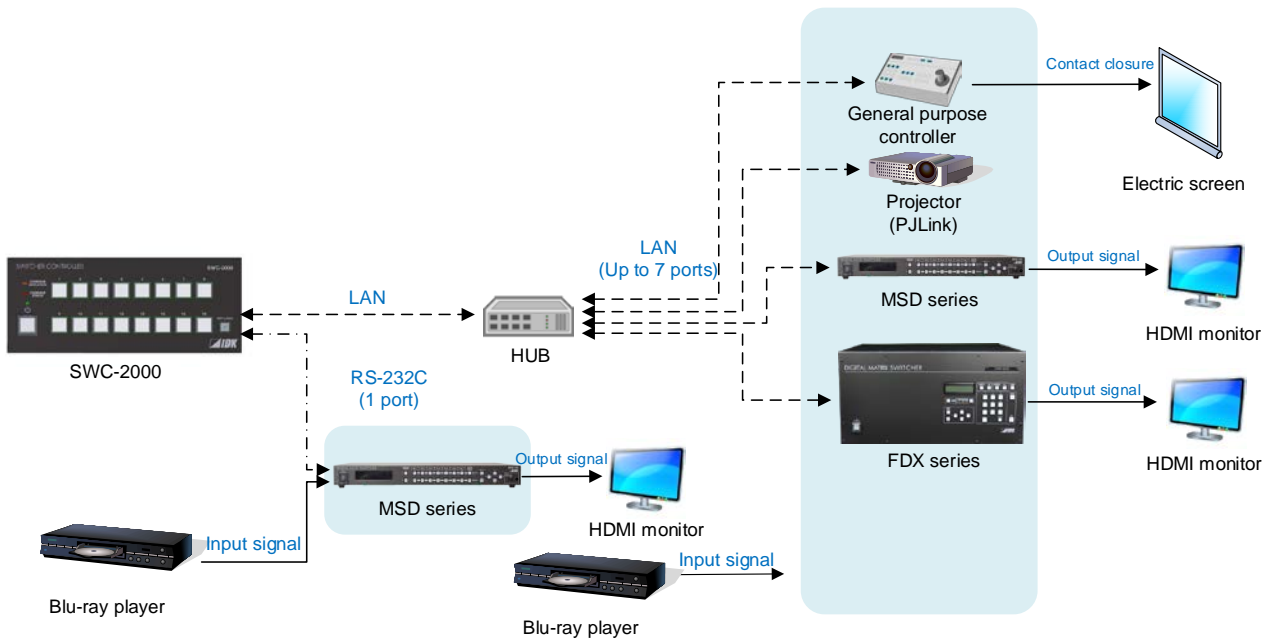
● All specifications and drawings are subject to change without notice. ● Please do not use the supplied AC adapter and power supply cable for other products. ● The terms HDMI and HDMI High-Definition Multimedia Interface, and the HDMI Logo are trademarks or registered trademarks of HDMI Licensing Administrator, Inc. in the United States and other countries. ● PJLink is a trademark in Japan, the United States, and other countries/regions. ● All other company and product names mentioned in this document are either registered trademarks or trademarks of their respective owners. In this document, the “®” or “™” marks may not be specified.



16 Buttons Switch Remote Controller SWC-2000 Diagram and Features



■ Application example



[Features]

- Controlling IDK products remotely over LAN or RS-232C
- PJLink
- 16 control command buttons (up to 10 commands per button)
- Standby status
- Front button lock
- Registering control commands (up to 32 commands) using WEB browser
- The following items for control commands can be set: timeout, delay, and LED lighting condition while a control command is being sent
- EIA rack and tabletop mountable

●All specifications and drawings are subject to change without notice. ●Please do not use the supplied AC adapter and power supply cable for other products. ●The terms HDMI and HDMI High-Definition Multimedia Interface, and the HDMI Logo are trademarks or registered trademarks of HDMI Licensing Administrator, Inc. in the United States and other countries. ●PJLink is a trademark in Japan, the United States, and other countries/regions. ●All other company and product names mentioned in this document are either registered trademarks or trademarks of their respective owners. In this document, the “®” or “™” marks may not be specified.